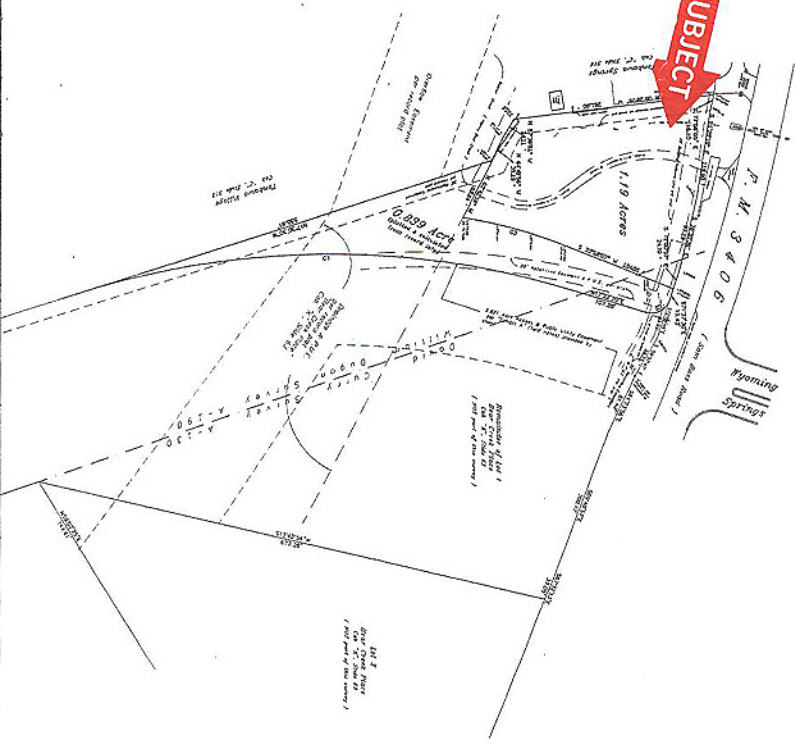


**SUBJECT**



Scale: 1" = 50'

Curve Data Table

Curve No.	Station	Chord	Radius	Area	Perimeter
1	111.11	111.11	111.11	111.11	111.11
2	111.11	111.11	111.11	111.11	111.11
3	111.11	111.11	111.11	111.11	111.11
4	111.11	111.11	111.11	111.11	111.11
5	111.11	111.11	111.11	111.11	111.11
6	111.11	111.11	111.11	111.11	111.11
7	111.11	111.11	111.11	111.11	111.11
8	111.11	111.11	111.11	111.11	111.11
9	111.11	111.11	111.11	111.11	111.11
10	111.11	111.11	111.11	111.11	111.11

The survey was made in accordance with the current laws, Statutes of the State of Texas, and the provisions of the Surveyors' Code, and is subject to the provisions of the Surveyors' Code.

*Bradley*  
 Surveyor  
 202-112-1234



Sheet	1	Scale 1" = 50'	Date 06/27/03
Drawn by	D.C. Hall	Checked by	Bradley
Client No.		Project No.	000-000

**Bradley**

**Standard Land Survey**  
 1.19 Ac. & 0.839 Ac. out of Lot 1  
 Bear Creek Place  
 Williamson County, Texas



2243 Hummer Drive  
 Suite 202  
 Aubrey, Texas 75209  
 Ph. 512 250-2942  
 Fax. 512 250-2944